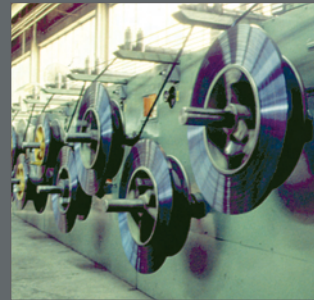


Hardened & Tempered Flat Rolled and Strip Steel Products

Hardened



ISO 9001:2000



Hardening & Tempering

Thompson Dayton Steel has the largest dedicated hardening and tempering facility in the United States. Reduce your insurance exposure and replace your need for in-plant heat treating with prehardened and tempered steel from Thompson Dayton Steel.

Steels That Can Be Hardened & Tempered

Cold Rolled Strip Steel
C-1022, 1035, 1050,
1055, 1060, 1064,
1065, 1070, 1074,
1075, 1095, 4140,
D6A, and other alloys.

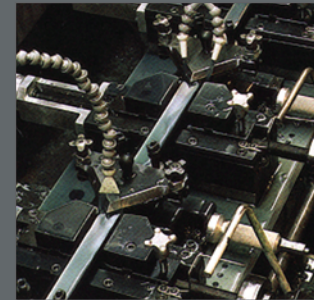


Slitting

In order to provide steel that is dimensionally accurate in every way for your specific application, we offer precision slitting and cut-to-length capabilities for a wide variety of steels and alloys.



American Made
Wood Bandsaw Steel



Edging

For a variety of edges on your hardened and tempered steel, Thompson Dayton can offer standard profiles as well as custom edging for an exact match to your specific part requirements.

Edges Available

All standard edges plus skiving and special mechanically shaped edges to conform with customers finished product.



Polishing

Thompson Dayton Steel can provide polishing of hardened and tempered steel for critical appearance and/or fatigue applications.

Surfaces Available

Scaleless Bright
Scaleless Blue
Straw
Bright Polish
Blue Polish

& Tempered

**THOMPSON
DAYTON**
STEEL SERVICE

Hardened and Tempered Strip Steels

Over .25% to 1.05% Carbon

Thickness Range .008" to .125" Width Range 0.250" to 22"

Restricted thickness tolerances are available.

Alloy Cold Rolled Strip Steels

Alloy Chemistries:

Special saw alloys for bars and chain parts. Electric furnace, aircraft quality and bearing quality can be specified. Modified grade alloy chemistries are available.







Hardness Table – Annealed

A	B	C	15T	30T	Tensile
30	38	-	73	41.5	38.5
-	40	-	73.5	43	40.5
31	42	-	74	44	41.9
32.5	44	-	75	45.5	42.5
33.5	46	-	75.5	47	44
34	48	-	76	48.5	45.5
35	50	-	77	49.5	46
36	52	-	77.5	51	47.5
36.5	54	-	78	52.5	48
-	56	-	79	54	50.5
38.5	58	-	79.5	55	51
39	60	-	80	56.5	52.5
40	62	-	80.5	58	54.2
41.5	64	-	81.5	59.5	56.7
42	64	-	82	60.5	56.7
43.5	68	-	83	62	59.5
44	70	-	83.5	63.5	61.5
45	72	-	84	65	64.5
46	74	-	-	66	66.5
46.5	75	-	85	67	68.5
47	76	-	-	67.5	69
48	77	-	85.5	68	70
48.5	78	-	86	69	71.5
49	79	-	-	69.5	72
49.5	80	-	86.5	70	73
50	81	-	87	71	73
50.5	82	-	-	71.5	75
51	83	-	87.5	72	77
52	84	-	88	73	78
52.5	85	-	-	73.5	80
53	86	-	88.5	74	81
53.5	87	-	89	74.5	83
54	88	-	-	75	85
55	89	-	89.5	75.5	87
55.5	90	-	90	76	89
56	90	-	-	77	91
56.5	92	-	91	78	96
57	94	-	-	78.5	98
58	95	-	91.5	79	101
59	96	-	92	80.5	106
60	98	20.5	-	81	109
61	99	22	92.5	81.5	112
61.5	100	23.5	93	82	116

Hardness Table – H&T

Tensile	Vickers	Brinell	HRC	HRA	15N	30N
170	360	342	36.6	68.7	78.6	56.4
175	370	352	37.7	69.2	79.2	57.4
180	380	361	38.8	69.8	79.8	58.4
185	390	371	39.8	70.3	80.3	59.3
190	400	380	40.8	70.8	80.8	60.2
195	410	390	41.8	71.4	81.4	61.1
200	420	399	42.7	71.8	81.8	61.9
204	430	409	43.6	72.3	82.3	62.7
210	440	418	44.5	72.8	82.8	63.5
214	450	428	45.3	73.3	83.2	64.3
220	460	437	46.1	73.8	83.6	64.9
224	470	447	46.9	74.1	83.9	65.7
230	480	(456)	47.7	74.5	84.3	66.4
234	490	(466)	48.4	74.9	84.7	67.1
240	500	(475)	49.1	75.3	85.0	67.7
244	510	(485)	49.8	75.7	85.4	68.3
250	520	(494)	50.5	76.1	85.7	69.0
254	530	(504)	51.1	76.4	86.0	69.5
260	540	(513)	51.7	76.7	86.3	70.0
264	550	(523)	52.3	77.0	86.6	70.5
269	560	(532)	53.0	77.4	86.9	71.2
274	570	(542)	53.6	77.8	87.2	71.7
279	580	(551)	54.1	78.0	87.5	72.1
284	590	(561)	54.7	78.4	87.8	72.7
289	600	(570)	55.2	78.6	88.0	73.2
294	610	(580)	55.7	78.9	88.2	73.7
299	620	(589)	56.3	79.2	88.5	74.2
304	630	(599)	56.8	79.5	88.8	74.6
309	640	(608)	57.3	79.8	89.0	75.1
314	650	(618)	57.8	80.0	89.2	75.5
319	660	-	58.3	80.3	89.5	75.9
324	670	-	58.8	80.6	89.7	76.4
329	680	-	59.2	80.8	89.8	76.8
-	690	-	59.7	81.1	90.1	77.2
-	700	-	60.1	81.3	90.3	77.6
-	720	-	61.0	81.8	90.7	78.4
-	740	-	61.8	82.2	91.0	79.1
-	760	-	62.5	82.6	91.2	79.7
-	780	-	63.3	83.0	91.5	80.4
-	800	-	64.0	83.4	91.8	81.1

Edges Available

-  **#1 Edge** – Perfect round or square edge, highest degree of accuracy.
-  **#2 Edge** – The natural hot roll edge.
-  **#3 Edge** – The natural edge produced by slitting (slit edge with burr).
-  **#4 Edge** – Approximate round edge produced by edge rolling; less accurate than #1 edge.
-  **#5 Edge** – Deburred slit edge.
-  **#6 Edge** – Square edge produced by edge rolling.

Skived Edge – Special mechanically shaped edges to conform with customer's finished product.

Common Uses

- Coil Springs
- Flat Springs
- Leaf Springs
- Chainsaw Bars
- Handsaws
- Bandsaw Blades
- Circular Saws
- Transmission Parts
- Clutch Plates
- Thrust Washers
- Doctor Blades
- Coater Blades
- Creping Doctor Blades

THOMPSON
DAYTON
STEEL SERVICE

815 W. Gasser Road Paulding, OH 45879
TEL: 419-399-4803 FAX: 419-399-4157 Toll Free: 800-452-1690
www.thompsondayton.com